



Border Runner

Make this simple table runner from any border print.

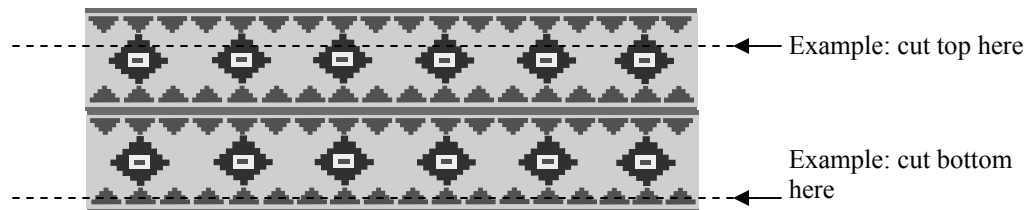
Yardage Required

Runner 1-1/2 yards
Backing 1-1/2 yards

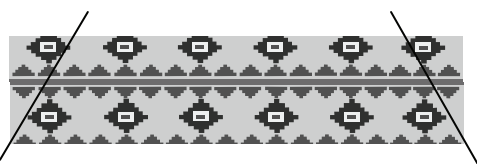


Instructions

1. You can use any border print. Your finished size will be determined by the length and width you cut your border fabric.
2. For the straight section of the runner, use your rotary cutter & ruler to cut a length of 1 yard or less. Pay attention to the overall design, and consider where your 60° angle will fall.
3. Carefully examine your border print and decide which parts you want to include in your border runner. Use your rotary cutter and ruler to cut an even line, following the bottom edge of the border design. Consider how you want the edge to appear, and be certain to cut at least 1/4" extra to allow for your seam allowance.



4. Next, identify the top of your border runner. Use your rotary cutter and ruler to cut an even line, following the top edge of the border design. Consider how you want the edge to appear, and be certain to cut at least 1/4" extra to allow for your seam allowance.
5. Cut an identical piece from your border fabric for the other side of the border runner. It is important that you use the ruler, and cut in the exact same manner as the first piece.
6. Use the 60° line of your ruler to cut a diagonal line on each side of the border print, as shown. The bottom edge will be wider than the top edge.



Stitchin' Tree Quilts

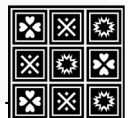
616 Market Street

Harlan, IA 51537

712-755-3655

Toll free 877-239-3655



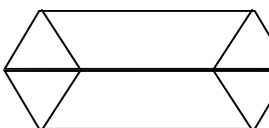
© 2011 Stitchin' Tree Quilts. All Rights Reserved.





Border Runner

Continued from front

7. Use your rotary cutter and ruler to cut two more strips for the triangle pieces. You will need a 60° ruler (any size) to assist with cutting the triangle sections. Begin by determining what portions of the border print you would like to use for the triangle pieces. Use the 60° line on your ruler to cut the first diagonal strip, just as you did in Step 6.
8. Place the 60° triangle at the top of the border print, along the diagonal line you just cut. Hold the triangle in place while you carefully place your ruler along the uncut side. Remove the triangle and make the cut. This will leave you with a 60° triangle that is the exact height of your border pieces from Step 6. Make 4 triangle pieces.
 
9. Pin a triangle piece to each end of a long border piece, carefully matching and pinning obvious lines in the border print. Stitch $1/4$ " seams and press open. Do the same for the other side of the border runner.
 
10. With right sides together, pin the two sides together at the center seam, matching obvious lines in the border print and seams. Press seam open.
 
11. With right sides together, layer the border runner, batting and backing together. With your rotary cutter and ruler, use the runner as a guide for cutting the backing and batting.
12. Take backing from bottom of the stack and place it with right sides together on top of the border runner. Machine stitch $1/4$ " around all edges of the runner, leaving a 5" opening to turn the runner. Trim corners and turn.
13. Stitch opening closed. Machine stitch along edges and along selected areas of the border print. Use decorative stitches, if desired.

Stitchin' Tree Quilts

616 Market Street

Harlan, IA 51537

712-755-3655

Toll free 877-239-3655

© 2011 Stitchin' Tree Quilts. All Rights Reserved.

